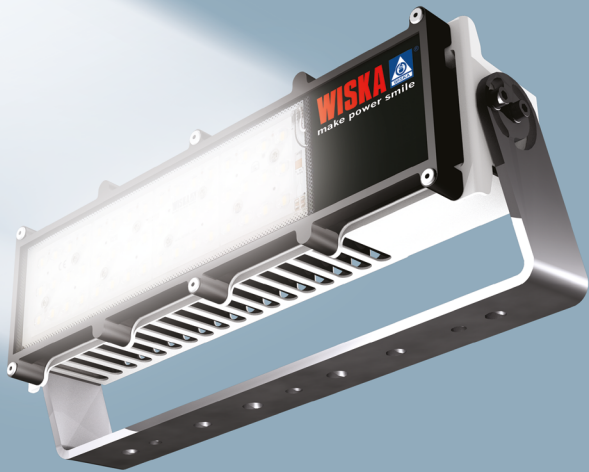


**WISKA** ®  
make power smile



LED Floodlight 5000 Series



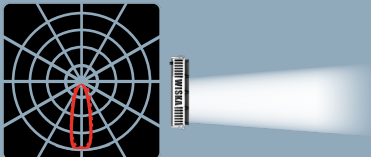
# Luminaire data

The LED Floodlight 5000 is available in 3 beam types: wide, medium (standard option) and narrow beam.

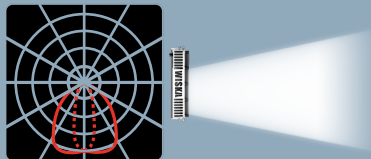
Zap this page using the Zappar App to unlock product information and links to photometric data.



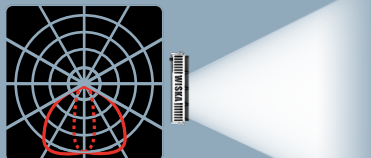
Lens: Narrow Beam



Lens: Medium Beam



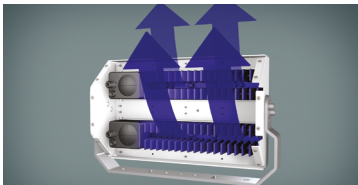
Lens: Wide Beam



# Key features



IP66 / 67, saltwater and UV resistant. Individual unit is IP68.



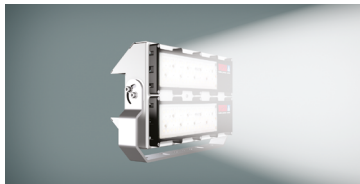
Heat conducting plastic module.



Stainless steel casing.



Independent modules.

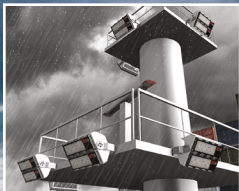


Luminous flux 4,000 lm / module.  
3 different lens types: wide, medium (standard) and narrow beam allow for individual lighting.

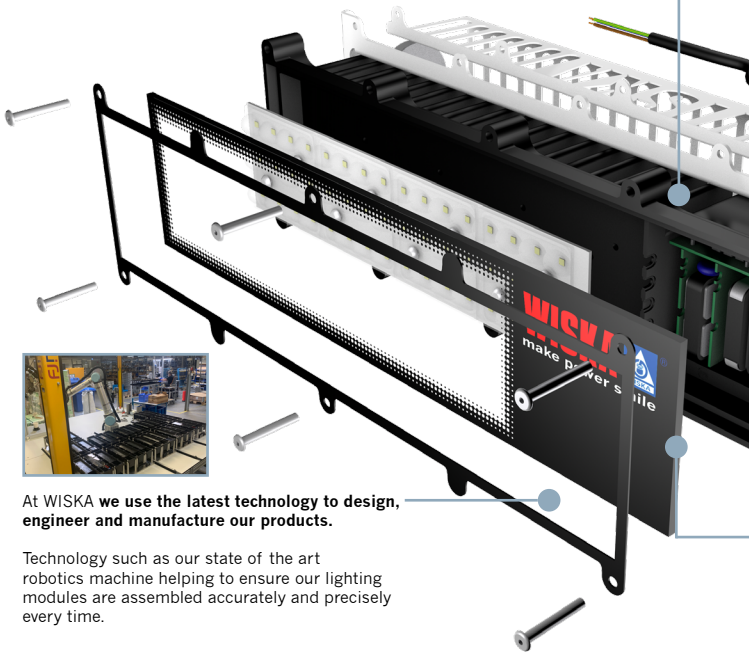


Optional front protection grid.

# Built for extreme environments



# Manufactured to the highest standards

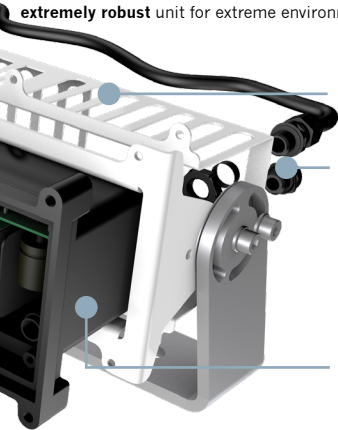
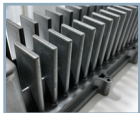


At WISKA we use the latest technology to design, engineer and manufacture our products.

Technology such as our state of the art robotics machine helping to ensure our lighting modules are assembled accurately and precisely every time.

As an **expert in plastic manufacturing**, we have used our expertise to design and develop a truly unique plastic housing unit for the LED Floodlight 5000.

This **revolutionary plastic design** conducts the heat, ensuring the unit remains cool. Due to no direct metal being used in the module itself: the LED Floodlight 5000 is **seawater resistant** and **anti-corrosive** making it an **extremely robust** unit for extreme environments.



Stainless steel frame, back cover and mounting bracket.

The VentPLUG allows air to flow through whilst at the same time preventing moisture entering. This helps equalise the pressure inside the unit, **preventing any condensation build-up** and pressure damage to the seals.



**Single module unit is IP68** rated perfectly suited to handle the harsh elements on both land and sea.

Our products are developed and tested extensively, ensuring they **meet the highest demands under the toughest of conditions**.



# The series



1x40 W



2x40 W



3x40 W



4x40 W

<b>Protection class</b>	Single module: IP68 / 2,3 & 4 modules: IP66 / 67
<b>Temperature range</b>	-30° C up to 55 °C
<b>Material</b>	Plastic / stainless steel, corrosion-free, vibration-proof, saltwater and UV-resistant
<b>Luminous flux</b>	4,000 lm / module
<b>Power</b>	40 W / module
<b>Light colour</b>	5,600 K
<b>Rated Lifetime</b>	L70/B10 @Ta +45 °C
<b>System Lifetime</b>	120,000 h
<b>Voltage</b>	100 - 240 VAC



**WISKA Hoppmann GmbH**

Kisdorfer Weg 28  
24568 Kaltenkirchen  
Germany

contact@wiska.de  
www.wiska.com

This leaflet is AR enabled.



Download the  
free Zappar App.



Scan the target to  
unlock the content.

LED Floodlight 5000 06/2022