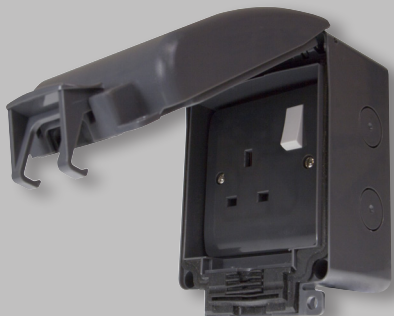




## *Weatherproof Socket Outlets & Enclosures*



A comprehensive selection of weatherproof electrical accessory products.

The polycarbonate construction makes the Aquip66 range a durable and long lasting heavy duty range of products.

**AQUIP66**<sup>®</sup>

Scolmore International Ltd, 1 Scolmore Park, Landsberg, Lichfield Road Ind. Estate, Tamworth, Staffordshire, B79 7XB

**Telephone:** 01827 63454

**E-mail:** [sales@scolmore.com](mailto:sales@scolmore.com), [technical@scolmore.com](mailto:technical@scolmore.com)

**Facsimile:** 01827 63362

**Website:** [www.scolmore.com](http://www.scolmore.com)

## Weatherproof Socket Outlets & Enclosures

### Product Range

#### Weatherproof Socket Outlets & Enclosures

<b>OA035AG</b>	1 Gang DP Switched Socket Outlet - IP66 Enclosure - Anthracite Grey
<b>OA036AG</b>	2 Gang DP Switched Socket Outlet - IP66 Enclosure - Anthracite Grey
<b>OA501AG</b>	1 Gang Accessory IP66 Unfurnished Enclosure - Anthracite Grey
<b>OA502AG</b>	2 Gang Accessory IP66 Unfurnished Enclosure - Anthracite Grey



OA035AG



OA036AG



OA501AG

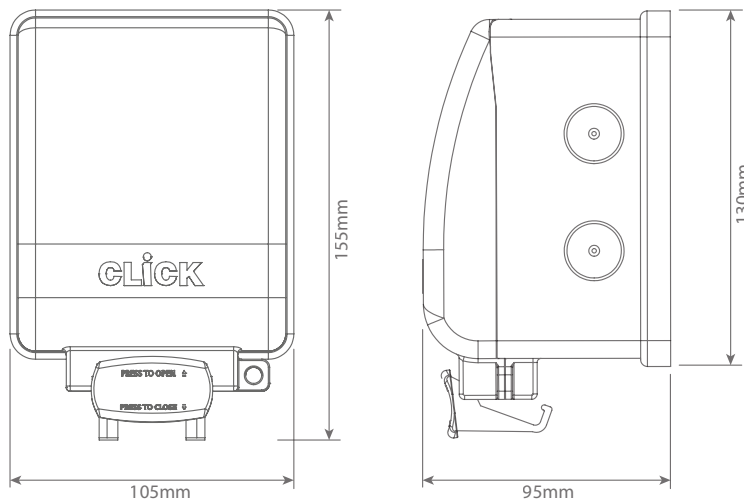


OA502AG

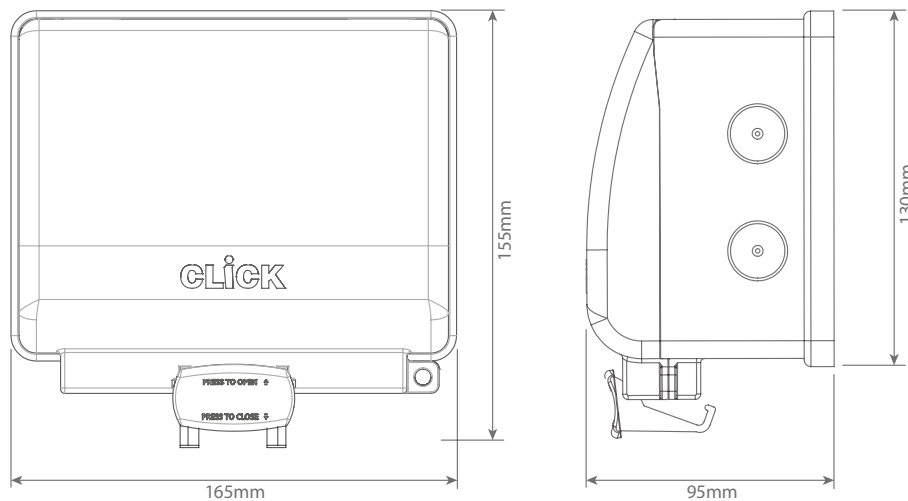
## Weatherproof Socket Outlets & Enclosures

### Product Dimensional Drawings (mm)

#### Weatherproof Socket Outlets & Enclosures



OA035AG, OA501AG



OA036AG, OA502AG

## Weatherproof Socket Outlets & Enclosures

### Technical Specification

#### Weatherproof Socket Outlets & Enclosures

<b>Material Composition</b>	IP66 Enclosure: Polycarbonate, Rubber Gasket, Brass Lugs Socket: Urea Plate and Rear Housing, Brass Terminals Mild Steel Earth Strap, Silver “on-lay” copper/brass contacts Steel and Yellow Passivated Terminal Screws
<b>Enclosure - Accessory Size</b>	1 Gang: Up to 86mm x 86mm, 2 Gang: Up to 146mm x 86mm
<b>Enclosure Accessory Depth</b>	35mm Maximum
<b>Cable Size (035,036)</b>	4 x 2.5mm <sup>2</sup> or 2 x 4mm <sup>2</sup>
<b>Cable Entry</b>	20mm Knockouts (1 top/bottom, 2 either side & 1 in rear)
<b>Lockable Cover</b>	Yes (Eyelet on cover and base)
<b>UV Stabilised Enclosure</b>	Yes
<b>Ingress Protection</b>	IP66
<b>Warranty</b>	5 Years (Domestic)
<b>Standards</b>	BS 1363-2: 1995 + A4: 2012 BS EN 60529: 1992 + A2: 2013

### Additional Information

Ensure that the mains supply is isolated before commencing installation and refer to the circuit diagram with the relevant product.

Bare earth cables must always be covered with appropriate sleeving and wired to the earth terminal.

Supplied complete with rubber gasket which helps maintain the IP rating when installing on to uneven walls.

# AQUIP66™

**Scolmore International Ltd**  
1 Scolmore Park; Landsberg  
Lichfield Road Industrial Estate  
Tamworth, Staffordshire B79 7XB

t: 01827 63454  
f: 01827 63362  
e: sales@scolmore.com  
w: www.scolmore.com

## EU DECLARATION OF CONFORMITY

1. *Issuer Name* Scolmore International Limited
2. *Issuer Address* 1 Scolmore Park, Landsberg,  
Lichfield Road Industrial Estate,  
Tamworth, Staffordshire, B79 7XB
3. *Object(s) of Declaration* Aquip66 Range
- a. *Group* Sockets & Enclosures
- b. *Models No.* OA035AG, OA036AG, OA501AG, OA502AG
4. *The object of the declaration described above is in conformity with the requirements of the following Legislations:*

Document No	Title
2014/30/EC	EMC Directive
2014/35/EC	Low Voltage Directive

5. *All products contained within the aforementioned comply with the relevant standards and requirements listed below.*

BS 1363-2: 1995 + A4: 2012  
BS EN 60529: 1992 + A2: 2013

6. *I hereby declare that the equipment named above has been designed to comply with the relevant sections of the above referenced specifications. The unit complies with all applicable Essential Requirements of the Directives.*

*In conjunction with the above all manufacture and process controls are in accordance with ISO 9001:2015.*

This declaration has been issued under the sole responsibility of the manufacturer, signed at, for and on behalf of: Scolmore International Limited



Karl Rawlins – Senior Technical Support Engineer