

**NATIONAL
VENTILATION**

Helping our environment
today and tomorrow

Energysaver™ Positive Input Systems

Effective at managing
condensation and mould



Call now to find out more: 01823 690 290

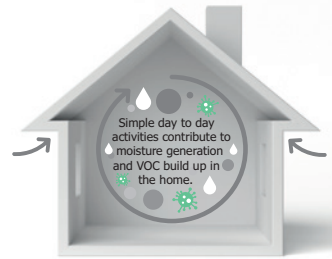
www.nationalventilation.co.uk Email: info@nvagroup.co.uk

What are Positive Input Systems?

The Monsoon Energysaver™ PIV range is suitable for all types of residential properties, offering both loft and wall units and can be added easily to existing dwellings. PIV systems bring filtered and clean air to the home, which is then introduced to the property through a central ceiling diffuser. This process helps dilute polluted, moisture-laden air and drastically reduces mould growth.

Why can homes have poor Indoor Air Quality - Condensation and Mould Control

Excessive indoor humidity, caused by daily activities like cooking and showering, can lead to mould, mildew and poor indoor air quality (IAQ). Mould and dust mites thrive in such conditions and can contribute to respiratory issues like asthma and bronchitis and poor air quality. Tried and tested Positive Input Systems reduce humidity within the home and preventing mould growth. Within a few weeks of installing a positive input system, you will notice the mould will have dried out and can be treated safely in the knowledge it will not return.



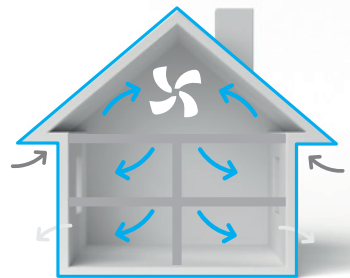
Maintaining good IAQ is crucial for overall well-being, especially for urban dwellers spending significant indoor time.

Duty of Care - Homes (Fitness for Human Habitation) Act 2018

- A new law recently came into force to ensure that rented houses and flats are 'fit for human habitation', which means that they are safe, healthy and free from things that could cause serious harm.
- Under the Act, the Landlord and Tenant Act 1985 is amended to require all landlords/property owners (private and social) to ensure that their properties, including any common parts of the building, are fit for human habitation at the beginning of the tenancy and throughout.
- Condensation and mould fall within this category and property owners should aim to not only protect their assets but their residents' health too.

Why choose Energysaver™ Positive Input Systems?

- The Monsoon Energy Saver™ range helps reduce condensation and mould growth by maintaining optimal humidity levels, which is crucial in preventing property damage and health issues.
- Low-energy DC motors and pulse heaters provide class-leading performance and reduced running costs
- Our PIV systems are designed to be easily retrofitted into houses, bungalows and apartments with multiple mounting options as standard providing a simple installation
- Our PIV systems are designed to operate quietly, ensuring a peaceful indoor environment while maintaining air quality.
- Using G4 Filters, the Monsoon Energy Saver™ range introduces fresh, filtered air into the home, diluting and replacing stale, polluted air, resulting in better indoor air quality and benefiting residents' health.



For homes with loft spaces, the PPS/L/H or PPS/L is installed in the loft and the discreet diffuser is installed in the hallway. For homes without loft spaces, the PPS/W/H is installed on the wall in a central hallway. Gently introducing tempered* air into the house curing even stubborn condensation and issues.

* Tempered air refers to the PPS/L/H and PPS/W/H models only

Energysaver™ Positive Input System

- Easy to mount base and hanging kit provided
- 5 year guarantee
- Helps to alleviate condensation and mould
- Low maintenance
- Easy carry handle
- On unit control with LED display
- Heater and basic models available



Ease of Fit

The PPS/L/H and PPS/L are designed to be fitted quickly saving time and money. The unit comes with both hanging kit and base mounting kit as standard. The easy carry handle allows the unit to be manoeuvred simply. The handle also allows for the unit to be angled when hung if space is at a minimum. Once the house size is selected the unit will use internal sensors to adjust airflow and heater activation.

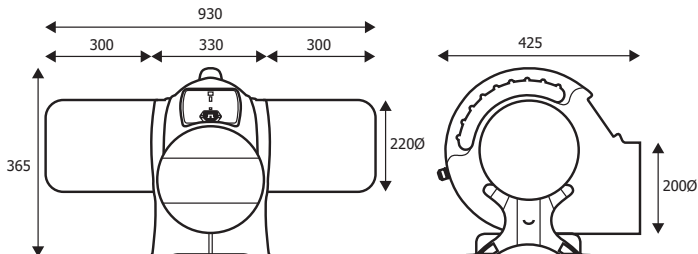
Product Information

230-240 V/AC. 50Hz single phase powering a low energy motor consuming down to 3.1W on trickle. These fans are double insulated and do not require an earth. All wiring must comply with current IEE regulations. They also come with a 2.5m power cable.

Performance Table

BEDROOM	TRICKLE (l/s)	POWER (W)	ENERGY RECOVERY (l/s)	ENERGY RECOVERY POWER (W)
1	19	3.1	29	5.1
2	25	4.3	37	7.6
3	31	6.0	46	12.0
4	37	8.0	49	13.1

Dimensions (mm)



Energysaver™ Wall Positive Input System

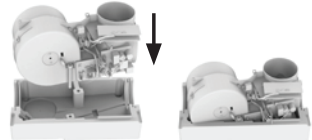
- **Easy to mount with lightweight foam construction**
- **5 year guarantee**
- **Helps to alleviate condensation and mould**
- **Low maintenance**
- **16 installation options in 1 unit**
- **On unit control with LED display**
- **Ideal for properties without loft space**



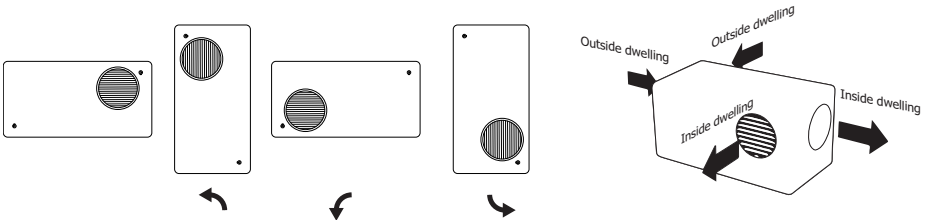
Ease of Fit

The PPS/W/H is designed to be fitted quickly saving time and money. The unit comes with a split foam construction meaning it can be easily handled even on a step ladder.

The replaceable cartridge allows for quick and easy replacement when the time comes without the need to redecorate or re-duct.



The unit can be mounted in 4 orientations meaning 1 unit will perform many installations. In every orientation, you can choose to install the unit so air can enter through the back or the side and leave through the front or the side.



Product Information

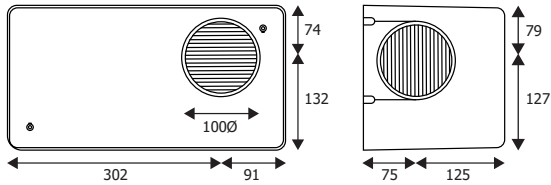
230-240 V/AC. 50Hz single phase powering a low energy motor consuming down to 4W on trickle, and on max boost. These fans are double insulated and do not require an earth. All wiring must comply with current IEE regulations.

Running Speeds

Running speeds are selected on the unit using the easy to read display. Speed selection is based on the number of rooms the property has from 1-4 bedrooms. The unit will then automatically adjust the flow rate accordingly.

Performance Table

BEDROOM	TRICKLE (l/s)	POWER (W)	BREAKOUT dB(A) @3m
1	13	4.0	11.6
2	17	8.3	18.9
3	21	12.5	25.4
4	25	18.3	29.7

Dimensions (mm)


Unit weight: 3kg

Scan Me!



Manufacturers & suppliers
of  monsoon products

National Ventilation, Stathe Road Burrowbridge, Somerset TA7 0RY

Tel: 01823 690 290 Fax: 01823 690 291 Web: www.nationalventilation.co.uk
Info Email: info@nvagroup.co.uk Tech Email: technical@nvagroup.co.uk